

Oil-injected

Rotary Screw Air Compressors

Installed motor power 5.5 - 400 kW/7.5 - 550 hp

Free air delivery from 0.36 to 74.49 m³/min, Pressure 7.5 - 13 bar



P-DNR202211-04 Specifications are subject to change without prior notice.
Never use compressed air as breathing air without prior purification in accordance with local legislation and standards.



Denair Energy Saving Technology (Shanghai) Plc.

No. 6767, Tingfeng Rd., Jinshan District,
Shanghai 201502, China
Tel.: +86 21 3783 1829
Fax: +86 21 6040 5929

info@denair.net
www.denair.net

Copyright © 2022 Denair Group. All rights reserved.

CONTENTS

- 01 OIL-INJECTED ROTARY SCREW AIR COMPRESSOR(fixed speed)
- 02 OIL-INJECTED ROTARY SCREW AIR COMPRESSOR(VSD)

P01
P06



OIL-INJECTED ROTARY SCREW AIR COMPRESSOR(FIXED SPEED)

Features and advantages



01

Smart Controller

- Increased reliability: durable keyboard, user-friendly, multilingual user interface.
- Improved ease of use: intuitive navigation system with main operation conditions include warning indications, maintenance scheduling etc.



02

Stainless Steel Oil Pipe And Air Pipe

- High temperature resistant (400 C = 752 F) and low temperature resistant (-270 C = -518 F), high pressure resistant.
- Ultra-long life (80 years), completely leak free and maintenance free.



03

Intelligent Control And Protection

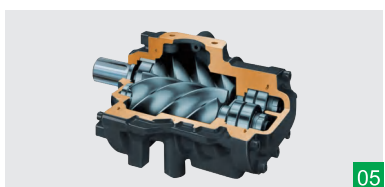
- Schneider electrical elements with original package from Germany, safe and reliable.
- Reasonable, simple and clear wiring, easy for maintenance.
- Good protection function ensures the stable running of the compressor unit.



04

Premium Efficiency Drive Motor

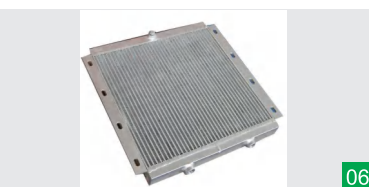
- Premium efficiency Totally Enclosed Fan Cooled (TEFC) IP54/IP55 motor (Class F insulation) protects against dust and chemicals etc.
- Long-term stable operation even in harsh environments up to 55 C (131 F)



05

State-of-the-art Screw Element

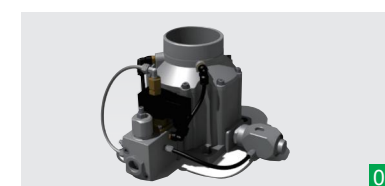
- Original DENAIR air end.
- Advanced SAP profile design
- The material of the rotors is American specialty steel.
- Superior Sweden SKF element bearings.



06

Efficient Radiator

High quality aluminum fins and copper coil materials with good thermal conductivity ensure the perfect cooling efficiency.



07

Air Inlet Valve

- Large suction area
- Valve seal adopts fluoro rubber
- Integrated design, failure and low maintenance rate
- Cast aluminum to avoid rust and temperature change



08

Heavy-duty Oil Filter

- Heavy-duty oil filter with excellent oil purification capability ensures a clean and safe oil system
- Long service period and easy filter change reduce maintenance costs.



09

Energy-saving 1:1 Direct Driven Design

Germany KTR brand maintenance-free coupling makes the motor drive the air end without transmission loss.



10

Efficient Separation System

- Reduction of pressure drops and energy costs
- Low oil consumption ensures minimal maintenance costs and long compressor lifetime
- Quality air with low oil content:
 - three step air-oil separation (centrifuge, gravity, filter)
 - oil content: less than 3 ppm by weight
 - hinged cover for easy separator element change



11

Superior Air Filter

- Superior air filter with two-stage dust removal and filtering system with efficiency of up to 99.9% even in heavy-duty environments
- Extends the service life of the compressor parts and components, ensures high air quality

Technical parameters for EEI 2***

Model	Maximum Working Pressure		Capacity FAD*				Installed Motor Power		Driving Model & Cooling Method	Noise level** [dB(A)]	Dimensions(mm)			Weight kg	Air outlet pipe diameter
			50Hz		60Hz						L	W	H		
	bar(g)	psig	m³/min	cfm	m³/min	cfm	kW	hp							
DA-90(W)	7.5	109	17.27	610	17.01	601	90	120	Direct Driven Air Cooling W-water Cooling	72	2450	1800	1700	2450	DN80
	8.5	123	16.93	598	16.82	594	90	120		72	2450	1800	1700	2450	DN80
	10.5	152	12.21	431	14.87	525	90	120		72	2450	1800	1700	2450	DN80
	13.0	189	12.11	428	11.27	398	90	120		72	2450	1800	1700	2450	DN80
DA-110(W)	7.5	109	20.05	708	19.10	674	110	150		75	2450	1800	1700	2510	DN80
	8.5	123	20.00	706	19.06	673	110	150		75	2450	1800	1700	2510	DN80
	10.5	152	16.33	576	17.01	601	110	150		75	2450	1800	1700	2510	DN80
DA-132(W)	7.5	109	23.48	829	24.37	861	132	175		75	2450	1800	1700	2620	DN80
	8.5	123	23.43	827	24.23	856	132	175		75	2450	1800	1700	2620	DN80
	10.5	152	20.50	724	18.95	669	132	175		75	2450	1800	1700	2620	DN80
DA-160(W)	7.5	109	28.63	1011	27.90	985	160	215		75	2650	1700	1850	3210	DN80
	8.5	123	28.49	1006	27.76	980	160	215		75	2650	1700	1850	3210	DN80
	10.5	152	23.26	821	23.97	846	160	215		75	2650	1700	1850	3210	DN80
	13.0	189	20.13	711	18.82	664	160	215		75	2650	1700	1850	3210	DN80
DA-185(W)	7.5	109	33.63	1187	30.45	1075	185	250		75	2650	1700	1850	3340	DN80
	8.5	123	33.28	1175	30.06	1061	185	250		75	2650	1700	1850	3340	DN80
	10.5	152	28.21	996	27.54	972	185	250	75	2650	1700	1850	3340	DN80	
DA-200(W)	7.5	109	37.00	1306	31.03	1096	200	270	78	3000	1950	2030	4750	DN100	
	8.5	123	36.57	1291	30.35	1071	200	270	78	3000	1950	2030	4750	DN100	
	10.5	152	30.07	1062	29.69	1048	200	270	78	3000	1950	2030	4750	DN100	
	13.0	189	27.82	982	26.97	952	200	270	78	3000	1950	2030	4750	DN100	
DA-220(W)	7.5	109	39.45	1393	37.22	1314	220	300	78	3000	1950	2030	4790	DN100	
	8.5	123	39.24	1386	37.17	1312	220	300	78	3000	1950	2030	4790	DN100	
	10.5	152	32.90	1162	33.25	1174	220	300	78	3000	1950	2030	4790	DN100	
	13.0	189	29.72	1049	27.07	956	220	300	78	3000	1950	2030	4790	DN100	
DA-250(W)	7.5	109	43.47	1535	42.87	1514	250	350	78	3000	1950	2030	4860	DN100	
	8.5	123	43.26	1528	41.30	1458	250	350	78	3000	1950	2030	4860	DN100	
	10.5	152	38.81	1370	37.04	1308	250	350	78	3000	1950	2030	4860	DN100	
	13.0	189	29.72	1049	33.15	1170	250	350	78	3000	1950	2030	4860	DN100	
DA-280(W)	7.5	109	50.22	1773	47.16	1665	280	375	78	3700	2400	2550	7000	DN125	
	8.5	123	50.06	1768	45.64	1612	280	375	78	3700	2400	2550	7000	DN125	
	10.5	152	45.77	1616	42.56	1503	280	375	78	3700	2400	2550	7000	DN125	
	13.0	189	33.83	1195	36.95	1305	280	375	78	3700	2400	2550	7000	DN125	
DA-315(W)	7.5	109	55.52	1960	50.88	1797	315	425	80	4500	2500	2450	7500	DN125	
	8.5	123	55.35	1954	50.83	1795	315	425	80	4500	2500	2450	7500	DN125	
	10.5	152	49.76	1757	46.27	1634	315	425	80	4500	2500	2450	7500	DN125	
DA-355W	13.0	189	45.22	1597	40.32	1424	315	425	80	4500	2500	2450	7500	DN125	
	7.5	109	64.59	2281	58.12	2052	355	475	80	4500	2500	2450	8000	DN125	
	8.5	123	61.20	2161	56.54	1997	355	475	80	4500	2500	2450	8000	DN125	
DA-400W	10.5	152	55.02	1943	51.57	1821	355	475	80	4500	2500	2450	8000	DN125	
	13.0	189	45.22	1597	45.35	1601	355	475	80	4500	2500	2450	8000	DN125	
	7.5	109	74.49	2630	61.72	2179	400	550	80	5000	2500	2750	14800	DN125	
DA-400W	8.5	123	70.52	2490	59.72	2109	400	550	80	5000	2500	2750	14800	DN125	
	10.5	152	60.83	2148	56.52	1996	400	550	80	5000	2500	2750	14800	DN125	
	13.0	189	49.17	1736	51.35	1813	400	550	80	5000	2500	2750	14800	DN125	

*)FAD in accordance with ISO 1217:2009, Annex C: Absolute intake pressure 1 bar (a), cooling and air intake temperature 20 °C
 **) Noise level as per ISO 2151 and the basic standard ISO 9614-2, operation at maximum operating pressure and maximum speed; tolerance: ±3 dB(A)
 ***) EEI 2 - Energy Efficiency Index 2, which refers to normal energy saving series
Specifications are subject to change without notice.

OIL-INJECTED ROTARY SCREW AIR COMPRESSOR(VSD)

Features and advantages



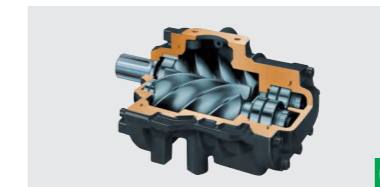
Variable Speed Drive

- Different variable speed drive brands available, such as INVT, ABB, Bosch etc.
 - VSD: variable volume, controlled costs: there is no unnecessary power generated, the DENAIR DVA models can reduce energy costs by 35% or more.
- Life cycle costs of the compressor can be reduced by an average of 22%.



Intelligent Control and Protection

- Schneider electrical elements with original package from Germany, safe and reliable.
- Reasonable, simple and clear wiring, easy for maintenance.
- Good protection function ensures the stable running of the compressor unit.



State-of-the-art Screw Element

- Original DENAIR air end.
- Advanced SAP profile design
- The material of the rotors is American specialty steel.
- Superior Sweden SKF element bearings.



Efficient Separation System

- Reduction of pressure drops and energy costs.
- Low oil consumption ensures minimal maintenance costs and long compressor lifetime.
- Quality air with low oil content:
 - three step air-oil separation(centrifuge, gravity, filter)
 - oil content: less than 3 ppm by weight
 - hinged cover for easy separator element change



Smart Controller

- Increased reliability: durable keyboard, user-friendly, multilingual user interface.
- Improved ease of use: intuitive navigation system with main operation conditions include warning indications, maintenance scheduling etc.



Stainless Steel Oil Pipe and Air Pipe

- High temperature resistant (400 °C = 752 °F) and low temperature resistant (-270 °C = -518 °F), high pressure resistant.
- Ultra-long life(80 years), completely leak free and maintenance free.

